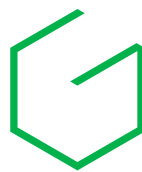
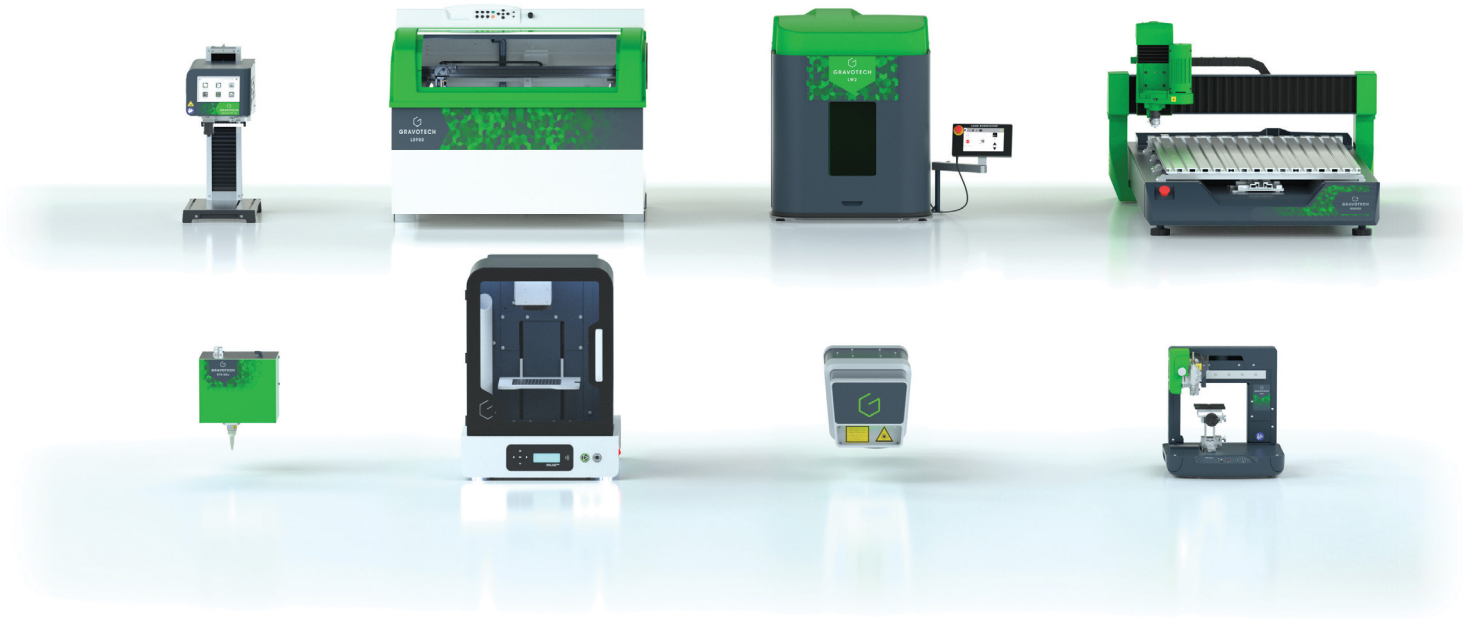




## ENGRAVING & MARKING OVERVIEW



# GRAVOTECH

EXPRESSION OF THINGS

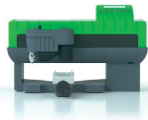


800.387.7439  
plasticdressup.ca



800.387.3130  
engraversdepot.ca

CANADIAN DISTRIBUTOR FOR GRAVOTECH

CNC  
TABLES

IS200

Small signage and traceability engraving machine



IS400 / IS400 VOLUME

One of a kind metal engraving machine



ISx000

The large format CNC engraving machine

Application scope	● ●	● ● ● ●	● ● ●
Technology	Rotary, scribing	Rotary, scribing	Rotary, scribing
Marking area max. (L x H) (mm)	225 x 80 (8.858" x 3.150")	305 x 210 (12.008" x 8.268")	IS6000 : 610 x 410 (24.016" x 16.142") IS7000 : 610 x 815 (24.016" x 32.087") IS8000 : 610 x 1220 (24.016" x 48.031")
Spindle power (W)	20	90 (optional spindle: 150)	90 - 200 (optional spindle: 150, 750, 1k)
Max. object height (mm)	30 (1.181")	IS400: 105 (4.134") IS400 Volume: 400 (15.748")	80 (3.149")



IM3

The iconic pantograph by Gravotech



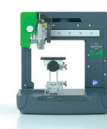
M10

Compact engraving machine for pre-defined flat items



M10 JEWEL

Compact ring and bracelet engraving machine



M20

Custom engraving for all kind of purposes, from jewellery and perfume to small industrial signage



M40

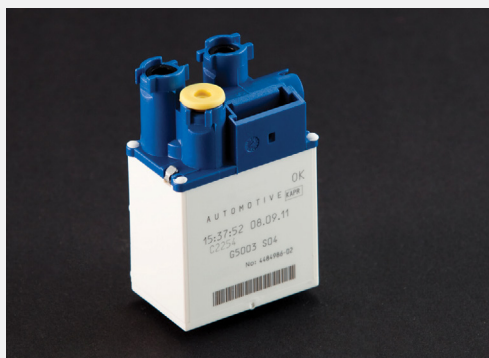
Multi-purpose rotary engraving machine for signage and gifts

Application scope	● ●	●	●	● ● ● ●	● ● ● ●
Technology	Rotary, scribing	Scribing	Scribing	Rotary, scribing	Rotary, scribing
Marking area max. (L x H) (mm)	250 x 140 (9.843" x 5.512")	70 x 60 (2.8" x 2.4")	-	100 x 100 (3.9" x 3.9")	305 (12") x 210 (8.3")
Spindle power (W)	50	-	-	30	30
Max. object height (mm)	50 (1.96")	40 (1.575")	ø 12.5 - 80 (0.5" x 3.1")	100 (3.9")	110 (4.3")
Dimensions (L x W x H) (mm)	580 (22.8") x 510 (20.1") x 280 (11")	225 (8.9") x 255 (10") x 290 (11.4")	230 (9") x 293 (11.5") x 290 (11.4")	375 (14.8") x 350 (13.8") x 360 (14.2")	550 (21.7") x 510 (20.1") x 320 (12.6")

## APPLICATIONS OF ENGRAVING, MARKING AND CUTTING

Look around you and you'll notice that most objects around you are marked, engraved or customized.

## ● Identification



## ● Personalization



## ● Signage



LASER TABLES



CO2 laser engraver for signage, creative cutting, and personalization

The signage and small series laser engraving machine

The large laser engraver that can do everything

Large laser engraving and cutting machine for high productivity

Application scope	●●●	●●●	●●●	●●●●
Laser source	CO2	CO2, Fiber	CO2, Fiber, Edge	CO2
Power (W)	25 - 40 - 60	20 - 25 - 30 - 40 - 50 - 60	20 - 30 - 40 - 50 - 60 - 80	60 - 80 - 100 - 150
Marking area max. (L x H) (mm)	460 x 305 (18.110" x 12.008")	610 x 305 (24.016" x 12.008")	610 x 610 (24.016" x 24.016")	1220 x 610 (48.031" x 24.016")
Lenses	1.5" - 2.0" - 2.5" - 3.0" - 3.5" - 4.0"	1.5" - 2.0" - 2.5" - 3.0" - 3.5" - 4.0"	1.5" - 2.0" - 2.5" - 3.0" - 3.5" - 4.0"	2.0" - 3.0" - 4.0"
Max. object height (mm)	145 (5.709")	145 (5.709")	250 (9.843")	300 (11.811")

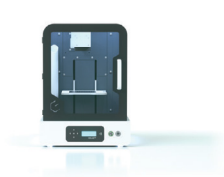
DOT PEEN STATION



IMPACT

Benchtop dot peen marking station

LASER STATIONS



WELASE™

Small laser engraver station for in-store and on-line personalization



LW2 TOUCH

Fully automated laser marking station

Application scope	●	Application scope	●●	●●
Technology	Dot peen Pneumatic or electromagnetic	Laser source	Fiber, Hybrid, Green, CO2	Fiber, Hybrid, Green
Software	Integrated traceability software with colour touchscreen	Use rate	Adpated for small to medium batches	Fully automatic Adapated for high use rate
Marking area max. (L x H) (mm)	100 x 120 (3.94" x 4.72")	Marking area max. (L x H) (mm)	Up to 110 x 110 (4.33" x 4.33")	Up to 205 x 205 (8.07" x 8.07")
Z axis stroke (mm)	300 (11.8")	Object Heigth (mm)	Up to 100 (3.94") CO2: 180 (7.09")	Up to 322 (12.68")
Z axis type	Manual or Motorized & programmable	Object Weigth (kg)	3 (6.6 lbs)	25 (55 lbs)

APPLICATIONS OF ENGRAVING, MARKING AND CUTTING

Find them and you'll find Gravotech! \_\_\_\_\_

● Creative



● Manufacturing



Information

Check out our vast applications



Do you want to find out more?



# INTEGRABLES MACHINES

## INTEGRABLE LASER MARKERS



### FIBER

Integrated laser marking system for metal and plastic parts



### HYBRID

The best compromise between versatility, high quality and high speed to meet all your marking needs



### GREEN

Integrated laser marking system to mark highly reflective materials and sensitive plastic materials



### CO2

High-speed laser engraver: the best to mark organic materials and coated surfaces

Application scope	●	●	●	●
Wavelength (nm)	1064	1064	532	10 600
Power (W)	20 - 30 - 50	10 - 20	5	30
Process automation	Industrial Ethernet Networks / Safety Performance Level d			
Embedded intelligence	Autonomous / Programmable by PLC / No PC required / Traceability Management			
Laser classification	Class 4 Laser system, possibility to switch in Class 1 for integration on a station or equipped with Mini inline module.			

## INTEGRABLE DOT PEEN & SCRIBING



### XF510 p

The fastest pneumatic dot peen marking machine on the market



### XF510 m

The precise and consistent electromagnetic dot peen marking machine



### XF510 r

The quiet metal marking machine



### XF530

Deep and indelible dot peen marking

Application scope	●	●	●	●
Technology	Dot peen Pneumatic	Dot peen Electromagnetic	Dot peen Scribing	Dot peen Pneumatic or Electromagnetic
Main advantage	Speed	2D codes	Silence	Large marking
Marking area max. (L x H) (mm)	50 x 20 (Cp) (1.97" x 0.79"), 100 x 80 (Sp) (3.94" x 3.15"), 200 x 80 (Dp) (7.87" x 3.15")	50 x 20 (Cm) (1.97" x 0.79"), 100 x 80 (Sm) (3.94" x 3.15"), 200 x 80 (Dm) (7.87" x 3.15")	40 x 50 (Cr) (1.57" x 1.97"), 80 x 50 (Sr) (3.15" x 1.97"), 160 x 50 (Dr) (6.3" x 1.97")	200 x 50 (7.87" x 1.97")
Material hardness (HRC)	< 62	< 62	< 62	< 62

## CONTROL UNIT



### XCOM

### CONNECTED TOUCH-SCREEN CONTROLLER

XCOM is the solution to pilot dot-peen and scribing machines and to control their integration on production lines. Connected to the main 4.0 industrial environments, XCOM is the most communicative and autonomous control unit on the market.



## CONSUMABLES

Our material range has been specially developed for engraving and cutting. "Surface" or "reverse" engraving, laser marking or cutter engraving, also compatible with digital printing, all our ranges of plastic, metal or stratified materials are available in a spectrum of colours, thicknesses, and finishes.



Laser materials



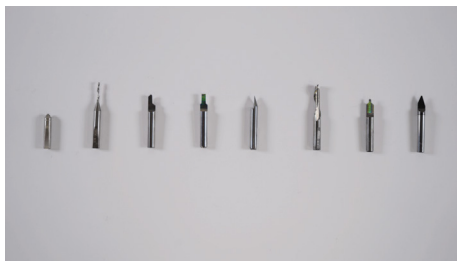
Rotary materials



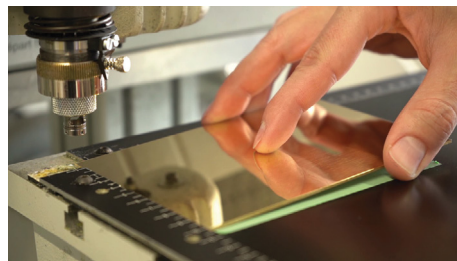
Engravables



Signage



Cutters & Inserts



Engraving supplies

## SOFTWARE

Our engraving and cutting expertise lead us to build our own software. Create your engraving and cutting paths, pilot your machines, design your 3D jewellery, Anything is possible!



ABC

ABC software is the easiest engraving software for Gravotech laser and rotary machines. Engrave in only 3 simple steps, from a computer or a tablet!



GRAVOSTYLE™

One-of-a-kind piloting software for Gravotech laser and rotary engraving machines.



LASERTRACE

Lasertrace is the Gravotech industrial software for traceability and identification. Various functions are available in a simple and friendly interface, for all industrial production needs.



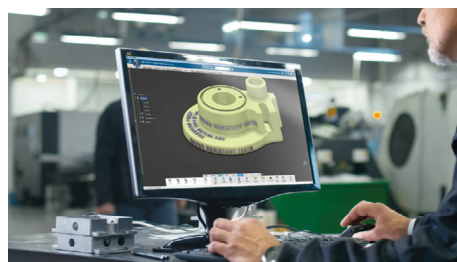
3DESIGN

Cutting edge 3D software for jewelry design that will keep your business ahead.



TYPE EDIT

For over 30 years, TYPE EDIT is the complete CAD/CAM software solution. Taking your ideas and drawings, through design and machining to production.



TYPE3-CAA

TYPE3-CAA is the only add-on available in CATIA® environment for text creation and mapping.

## SERVICE & SUPPORT

With our direct presence in over 50 countries, we always have a marking and engraving expert close to you to bring their expertise and know-how in qualifying your application, installing your equipment and training your collaborators.



Training



Technical Support



Maintenance

## THE EXPRESSION OF THINGS

Humans have a unique quality: to be able to express themselves. With the cutting-edge technologies that we master for permanent marking and engraving, we are giving this power to objects.

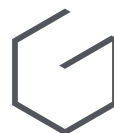
Laser, mechanical engraving, scribing and dot peen: we are the only ones to pioneer and master all these types of marking.

We are a manufacturer of machines, CAD software and Consumables with support all over the world.

The result of the integration of pioneering technologies, we are constantly exploring new solutions to innovate and shape the future of the Expression of Things.

We know the entire chain, from creation to production and service to provide you with the offer, best suited to your needs.

Gravotech was born in 2008 from the merger of Gravograph, Technifor and Type3 and unified under one brand in 2021.



**GRAVOTECH**  
EXPRESSION OF THINGS

**DISTRIBUTOR**



PLASTIC DRESS-UP LTD.

Plastic Dress-Up Ltd. (Canada)  
120 Great Gulf Drive, Concord  
ON L4K 5W1

phone: 905.660.5600 fax: 905.660.5714  
phone: 1.800.387.7439 fax: 1.866.826.8872

email: [info@plasticdressup.ca](mailto:info@plasticdressup.ca)  
web: [plasticdressup.ca](http://plasticdressup.ca)



Engravers Depot Inc.  
120 Great Gulf Drive, Concord  
ON L4K 5W1

phone: 905.501.9111 fax: 905.501.9491  
phone: 1.800.387.3130 fax: 1.888.501.9491

email: [edi@engraversdepot.ca](mailto:edi@engraversdepot.ca)  
web: [engraversdepot.ca](http://engraversdepot.ca)



PLASTIC DRESS-UP LTD.

Plastic Dress-Up Ltd. (Western Canada)  
14225-115 Avenue, Edmonton  
AB T5M 3B6

phone: 780.454.9870 fax: 780.454.1950  
phone: 1.800.661.3972 fax: 1.800.443.8291

email: [sales@plasticdressup.ca](mailto:sales@plasticdressup.ca)  
web: [plasticdressup.ca](http://plasticdressup.ca)