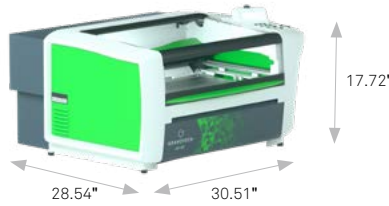


Laser technologies

Gantry

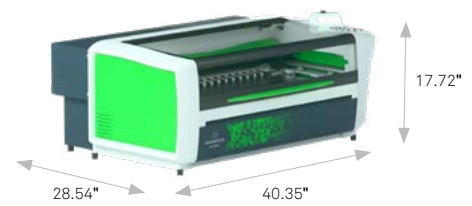
LS100

Compact & affordable



LS100^{EX}

Extended capacities



Dimensions - LxWxH (mm)	725 x 775 x 450 (28.54" x 30.51" x 17.72")	725 x 1025 x 450 (28.54" x 40.35" x 17.72")
Lasering area (mm)	460 x 305 (18" x 12")	610 x 305 (24" x 12")
Z axis (mm)	145 (5.7")	145 (5.7")
CO2 ENERGY (W)	25	25
Sealed CO2 (W)	40 - 60	40 - 60
Fiber (W)	-	20 - 30
Edge	-	-
Standard features	Point & Shoot - Full Table autofocus - Electrical Z - Embedded dashboard - Manual Print & Cut - Laserstyle software - Direct driver - integrated exhaust compatible	
Options	Honey Comb cutting table - Cylindrical attachment - range of focal optics - Exhaust devices - Floating pin cutting table	
Net Weight (Kg)	43	70

Accessories

Range of integrated exhaust devices

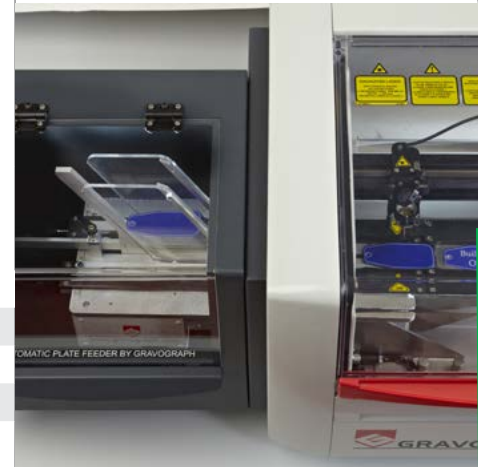
Designed specifically for Gravograph systems, these exhaust units are essential lasering accessories. They enable the marking, engraving and cutting of fume generating material such as rubber, acrylic or wood within a safe and pleasant working environment. Compact - 3 stage filtration - Single point connection - Moveable, on castor wheels - Synchronised on/off with laser.



	LE120HP / LE140HP	LE150HP	LNI900	LE190HP	ES10	ES30
Max. air flow (m³/h)	400	400	240	700	200	360
Static pressure (kPa)	10	10	22	10	4	9
Active carbon (L)	20	40	42	40	13	30
Compatible	LS100	LS100Ex	LS900	LS1000 [®]	with full range	

APF Laser

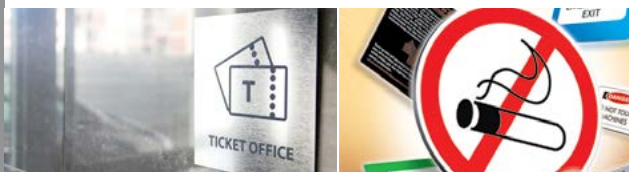
With a capacity of up to 195 plates, the APF is an essential accessory for high volume lasering of rating plates, tags, ID plates or labels. APF: compatible with LS100, and LS100EX. No external air compressor required.



Applications

Signage

Rubber Stamps, Nameplates, Badges, Directories, Synoptic, Safety, Signs, Location & Directional, Fabricated Elements, DDA Braille Profiling, Inlay Cutting...



Personalization

Pet Tags, Glassware, Tableware, Pens, Paper Goods, Gifts & Corporate, Gifts, Photos, Jewelry, Guns, Recognition & Awards, Sport and Trophies, Cup, Fabric, Leather...

