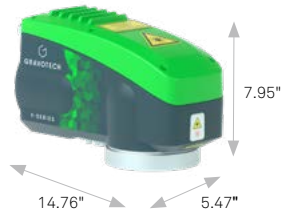
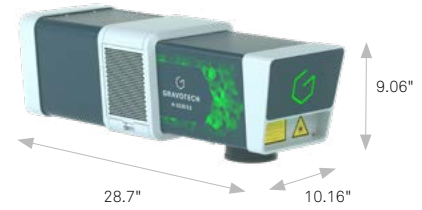


Gravotech Fiber Series

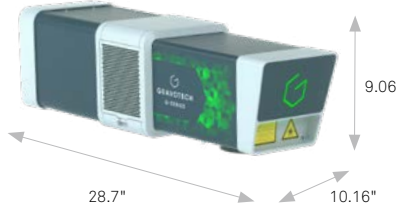


Gravotech Hybrid Series

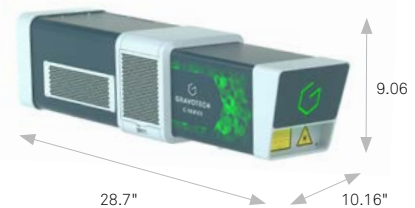


Dimensions - LxWxH (mm)	139 x 375 x 202 (5.47" x 14.76" x 7.95")	258 x 730 x 230 (10.16" x 28.7" x 9.06")
Engraving area (mm)	up to 300 x 300 (12" x 12")	up to 300 x 300 (12" x 12")
Power (W)	20 - 30 - 50	10 - 20
Z stroke (mm)	-	-
Net weight (kg)	7 (15.43lb)	19.8 (43.65lb)

Gravotech Green Series



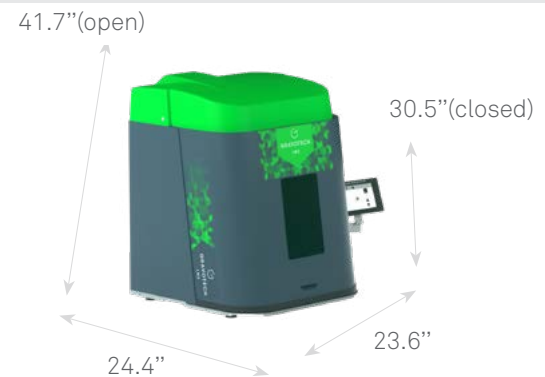
Gravotech CO<sub>2</sub> Series



Dimensions - LxWxH (mm)	258 x 730 x 230 (10.16" x 28.7" x 9.06")	258 x 730 x 230 (10.16" x 28.7" x 9.06")
Engraving area (mm)	up to 150 x 150 (5.9" x 5.9")	up to 150 x 150 (5.90" x 5.90")
Power (W)	5 - 10	20 - 30
Z stroke (mm)	-	-
Net weight (kg)	19.8 (43.65lb)	19.8 (43.65lb)

Gravotech Class I Laser Enclosures

ENCLOSURES



Gravotech Laser enclosures create a safe standalone laser solution