



Rotary



UV Print



Indoor



Surface

Double-sided

surface /
core color

gold / black / silver	18472*	1.5 mm (1/16")
silver / black / silver	18482*	3.0 mm (1/8")

* One side brushed gold, other side matte silver

** Both sides matte silver

BENEFITS

- One product with two finishes
- Aluminum caps with a black phenolic core
- No paint filling required

APPLICATIONS

Professional interior signage, award plates, identification plates, signage

SPECIFICATIONS

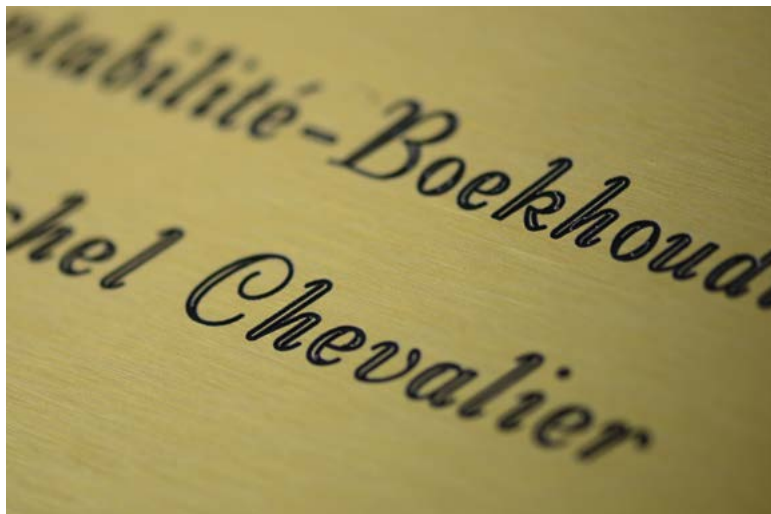
Finish	Brushed, Matte
Composition	Aluminum / Phenolic
Engraving depth	0.3 mm (.012")
Full sheet	1220 mm x 605 mm (48" x 23")
Half sheet	610 mm x 605 mm (24" x 23")
Quarter sheet	605 mm x 305 mm (23" x 12")
Other size	-

CAPABILITIES

Interior	■
Exterior	-
Shear	-
Saw	■
Silk screen	■
Hot stamp	-
Heat bending	-
Scratch resistant	■
Flexible	-
Break resistant	■
UV resistant	-
Min. temp.	-40°C (-40°F)
Max. temp.	180°C (356°F)

TECH TIPS

This material offers the advantages of aluminum without the inconvenients. Its aluminum surface on both sides and phenolic core save time and money by avoiding paint filling.



Call 1.800.387.3130 or visit www.engraversdepot.ca

Printed colors for indication only. Cannot serve as a substitute for real material sample.
The dimensions indicated represent our minimal commitment.

