

No clamping, no tape, no vacuum table

A real time saver for your engraving and cutting jobs.

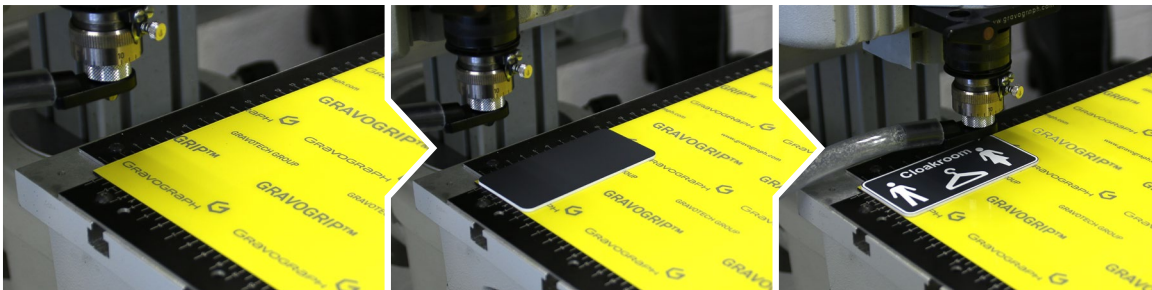
- All kinds of plastic or metallic materials in variable thickness secured effortlessly
- Also suitable to hold small items: medals, tags, labels, etc.
- Ideal for engraving and cutting depending on materials
- No oily residues after use

The indispensable fixing accessory for your daily jobs

Flexible material placed on your engraving / marking table* to maintain the material to be engraved or cut into place.

* For IM4, M20, IS200 & M40 use a support table, see below for more informations.

Easy to use, Minimum maintenance (Cleans with soapy water)



1. Place Gravogrip™ on your table

2. Position the material and press down

3. Engrave!

Gravogrip™ sizes

Choose the size that will best suit your machine's working area.

78056	Full sheet 1220 x 610 mm (48" x 24")
67252	610 x 610 mm (24" x 24")
71052	610 x 305 mm (24" x 12")
32262	305 x 305 mm (12" x 12")
45696	310 x 215 mm (12".20 x 8.46")
71053	305 x 200 mm (12" x 7.87")
71054	225 x 80 mm (8.85" x 3.15")
70996	120 x 100 mm (4.72" x 3.93")
72027	120 x 80 mm (4.72" x 3.15")

For smaller size machines, use one of the support tables* specially designed to that effect.

	Gravogrip™ support table*	Delivered with replacement mat
72024	for IM4 machines	ref. 72027 (120 x 80 mm) (4.72" x 3.15")
70997	for M20/M20XL machines	ref. 70996 (120 x 100 mm) (4.72" x 3.93")
71116	for IS200 machines	ref. 71054 (225 x 80 mm) (8.85" x 3.15")
45697	for M40 machines	ref. 45696 (310 x 215 mm) (12.20" x 8.46")

* All support tables delivered with one piece of Gravogrip™ to fit.

See also p.126 Jigs & Holding Devices.



Gravogrip Boost

Spray - 250ml (8.45 oz)

Ref. 69669*

Reactivate your Gravogrip™ by spraying Gravogrip Boost on it. Wipe of any residue or chips with a cloth to extend the life of your Gravogrip™ surface.

* These items are shipped via ground transportation. For other means of transport, please consult us.



GRAVOTECH
EXPRESSION OF THINGS

